

Horton & Senate



Flat 1, 474 Gillott Road, Birmingham, West Midlands, B16 9LH

£765

- One Bedroom
- Excellent Location for Transport links & local amenities
- EPC RATING D
- Ground Floor
- Gas Central Heating
- Available June
- Part Furnished
- Council Tax A

474 Gillott Road, Birmingham B16 9LH

Horton & Senate are pleased to offer this One bedroom Ground Floor property , Available June
The property is within easy reach of Birmingham City Centre, and is approached via communal entrance. Separate Kitchen and dining area.

Gas Central Heating

EPC RATED D

Council Tax Band A

Part Furnished

1

1

null

D

Council Tax Band: A

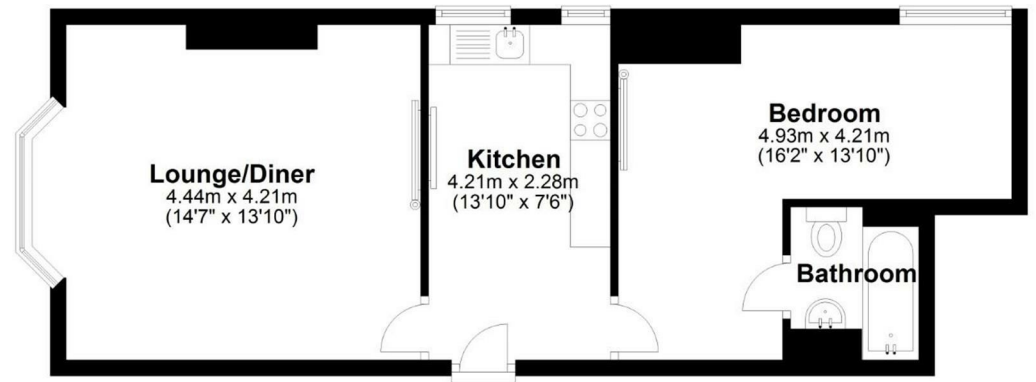






Floor Plan

Approx. 47.8 sq. metres (514.4 sq. feet)



Total area: approx. 47.8 sq. metres (514.4 sq. feet)



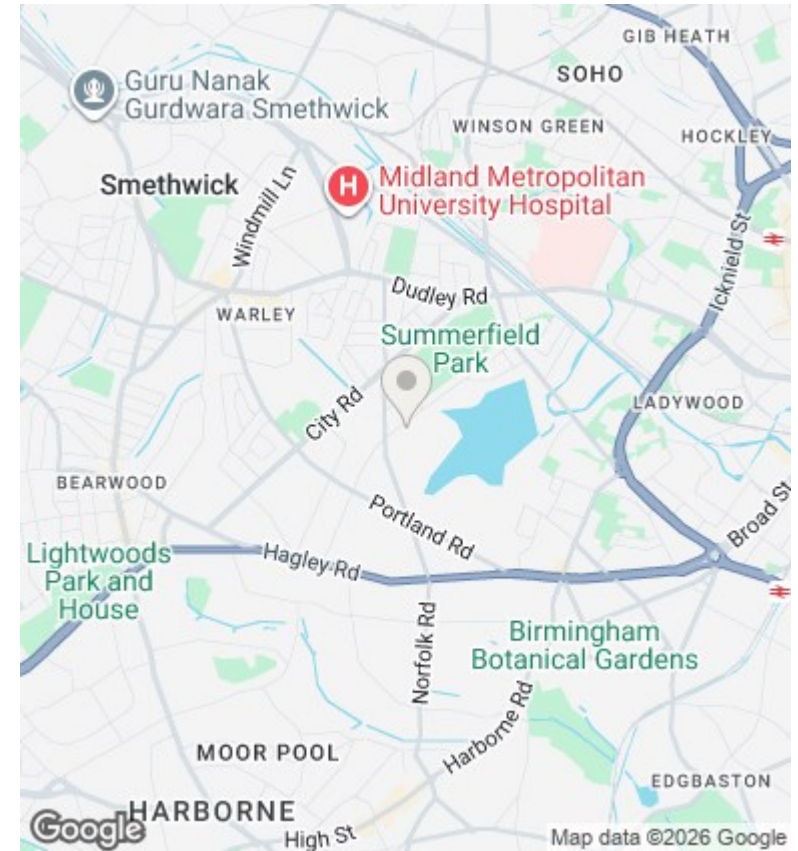
Directions

Viewings

Viewings by arrangement only. Call 01564 773200 to make an appointment.

Council Tax Band

C



Energy Efficiency Rating		
	Current	Potential
<i>Very energy efficient - lower running costs</i>		
(92 plus) A		
(81-91) B		
(69-80) C		72
(55-68) D	63	
(39-54) E		
(21-38) F		
(1-20) G		
<i>Not energy efficient - higher running costs</i>		
England & Wales		EU Directive 2002/91/EC